



For the future of our environment



River Basin Management Planning in the Solway Tweed, Statement of Consultation Steps

14th November 2024

Consultation opportunities to help develop the next River Basin Management Plan for the Solway Tweed.

Overview

This statement sets out the steps SEPA will take to engage stakeholders in the review and updating of the River Basin Management Plan (RBMP) for the Solway Tweed.

Introduction

The Solway Tweed river basin management plan is the route map for protecting and improving the water environment. The plan sets out what the Scottish Government, Defra, SEPA, The Environment Agency, responsible authorities and others will do to ensure a healthy water environment and maximise the benefits it can bring for wildlife, people and businesses. Maintaining this resource is vital to this area's continued economic success and ability to adapt to our changing climate and changing population.

This statement sets out timetable and arrangements for how we will work with you to review and update the Solway Tweed river basin management plan (RBMP4) and provides a map of the water bodies on or close to the national border. We are keen to work with you if you manage or have an interest in these sites.

Timetable for updating the plan – when and how you can get involved.

We will aim to publish the next river basin management plan for Solway Tweed in December 2027. There is a legal requirement for the agencies to provide you with two consultation opportunities of six months when you can help develop and influence the plan. They are:

By 22nd December 2025

An opportunity to comment on the Significant Water Management Issues report. This report sets out the significant issues that adversely affect the quality of Solway Tweed's Water Environment. These issues will form the basis for new or updated objectives and measures included in the draft plan.

By 22nd December 2026

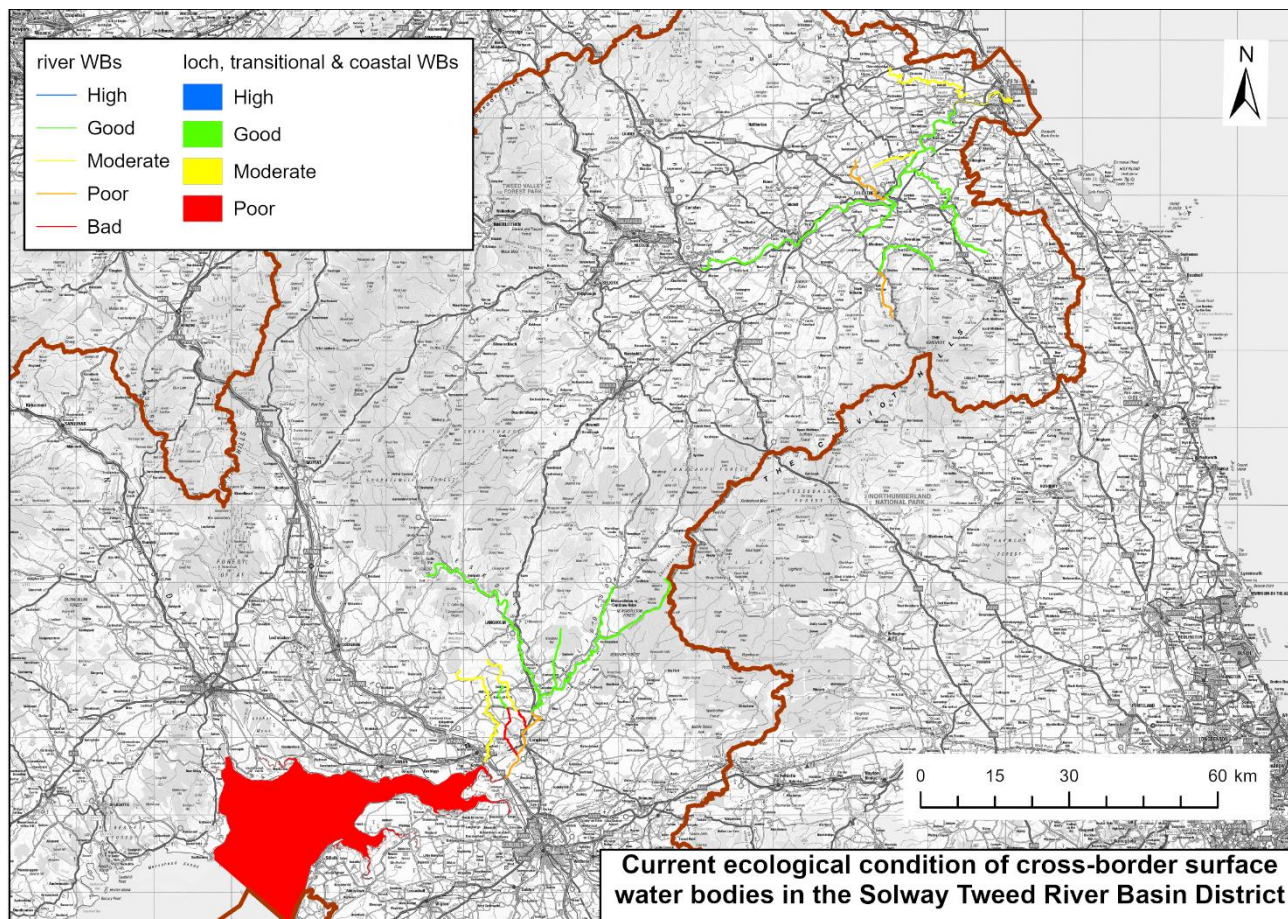
An opportunity to comment on the draft version of the river basin management plan. This is likely to take the form of a high-level summary supported by an interactive online tool, with links out to more detailed information held by the relevant agency, including draft objectives.

Water bodies on or close to the border

We have provided a map showing the water bodies that are close to or form the national border between Scotland and England. SEPA and the Environment Agency have a responsibility to work jointly to ensure that these water bodies do not deteriorate, or are improved to meet good condition, if necessary. The Significant Water Management Issues report will look at potential reasons for any decline in condition.

If you are interested in sites outside this area, please refer to the Statement of Consultation Steps for Scotland available on our website or the [working-together-2024](#) document prepared by the Environment Agency.

If you wish to make any representations relating to this summary, you can contact us at RBMP@SEPA.org.uk before 14th May 2025.



Map 1 shows the water bodies that are at or close to the national border between Scotland and England.

For information on accessing this document in an alternative format or language, please contact SEPA by emailing equalities@sepa.org.uk

If you are a user of British Sign Language (BSL), the Contact Scotland BSL service gives you access to an online interpreter, enabling you to communicate with us using sign language. contactscotland-bsl.org