



Legal, Authorisations,
Compliance and Enforcement

SUCCESS STORIES: ENHANCED AND COORDINATED COMPLIANCE AND ENFORCEMENT WITHIN OCEANS AND COASTAL ENVIRONMENT

SOUTH AFRICA



environmental affairs
Department:
Environmental Affairs
REPUBLIC OF SOUTH AFRICA



MARITIME OVERVIEW

- **Facts**

- 3 200 km of coastline
- 50 National Acts regulating marine governance
- 30% of the population stay within 60 km of the coastline
- Estimated 12 000 vessels visit SA Ports per year
- 120 million tonnes of oil and bunker fuel per year
- 12 proclaimed fishing harbours
- 21 New Marine Protected Areas



environmental affairs
Department:
Environmental Affairs
REPUBLIC OF SOUTH AFRICA

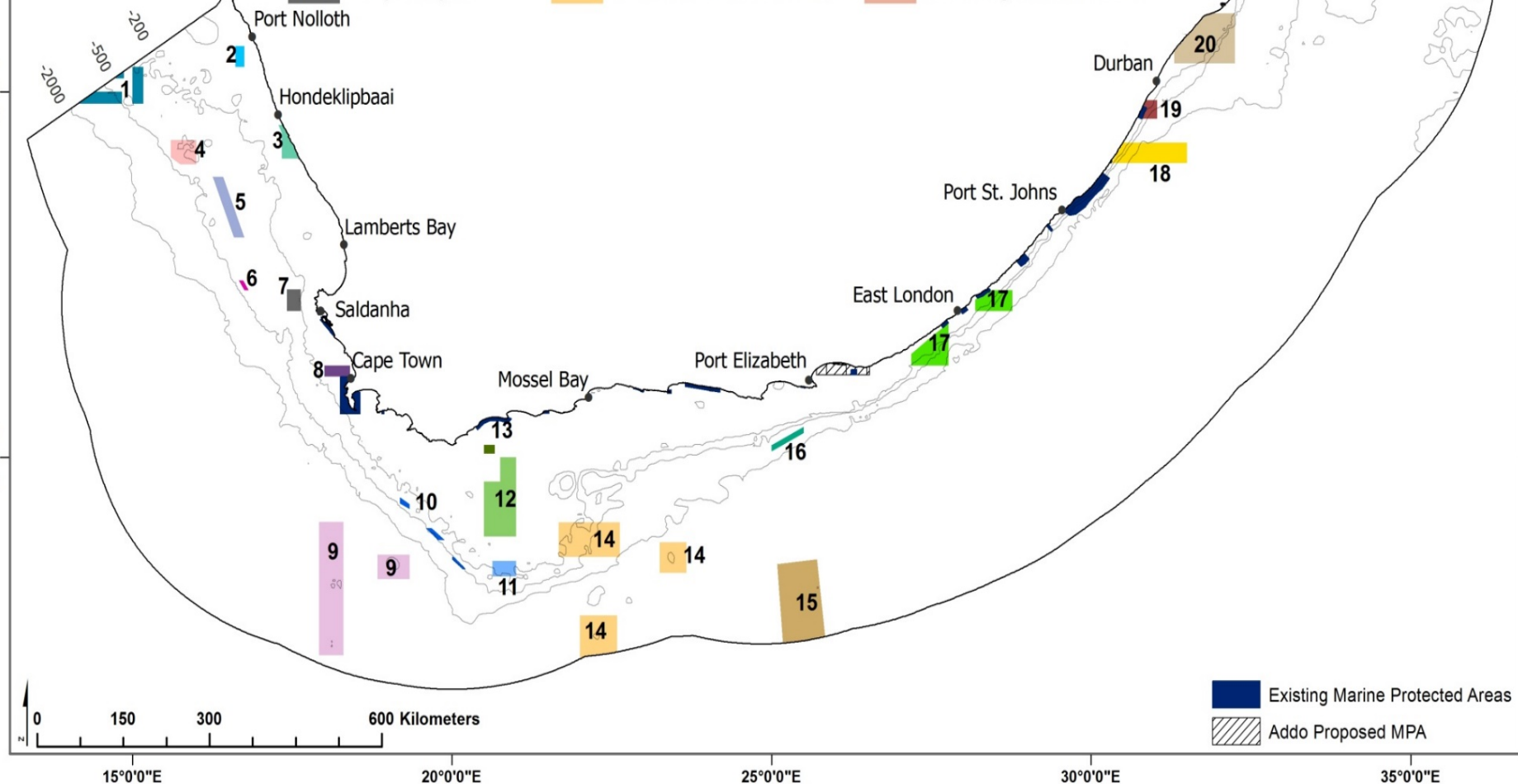


Operation Phakisa Proposed Marine Protected Area Network



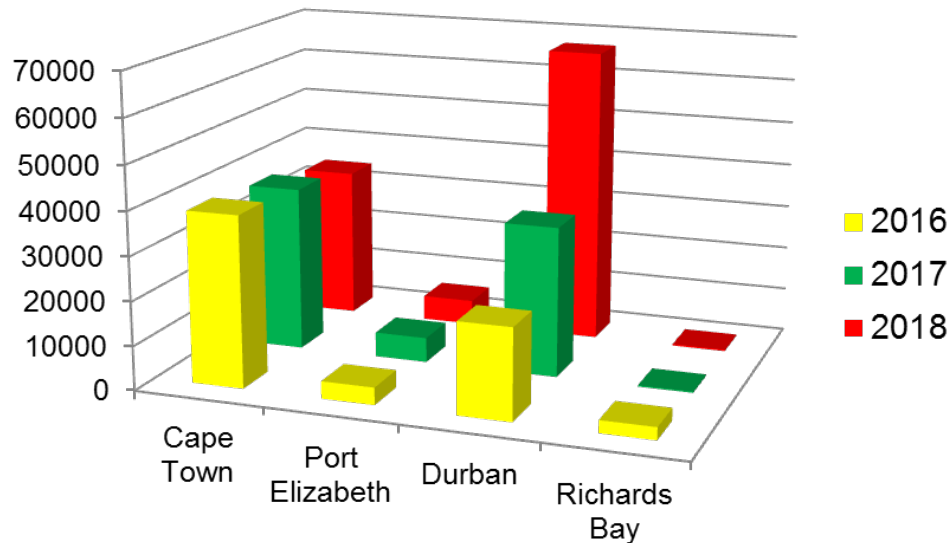
December 2015

- | | | |
|-------------------------|--------------------------------|------------------------------|
| 1 Orange Shelf Edge | 8 Robben Island | 15 Agulhas Front |
| 2 Namaqua Fossil Forest | 9 Southeast Atlantic Seamounts | 16 Port Elizabeth Corals |
| 3 Namaqua National Park | 10 Brown Bank Corals | 17 Amathole Offshore |
| 4 Childs Bank | 11 Brown Bank Complex | 18 Protea Banks |
| 5 Benguela Bank | 12 Agulhas Bank Complex | 19 Aliwal Shoal |
| 6 Benguela Muds | 13 Agulhas Muds | 20 uThukela |
| 7 Cape Canyon | 14 Southwest Indian Seamounts | 21 iSimangaliso Wetland Park |



- Existing Marine Protected Areas
- Addo Proposed MPA

MARITIME OVERVIEW

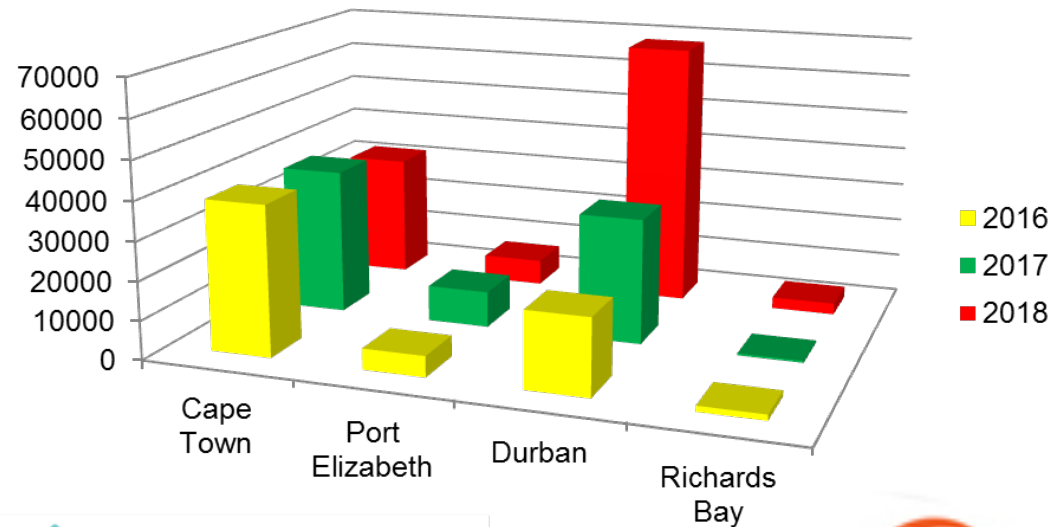


Arrival comparison for a three year period.

Note: 2018 statistics only until 11 November 2018

Departure comparison for a three year period.

Note: 2018 statistics only until 11 November 2018



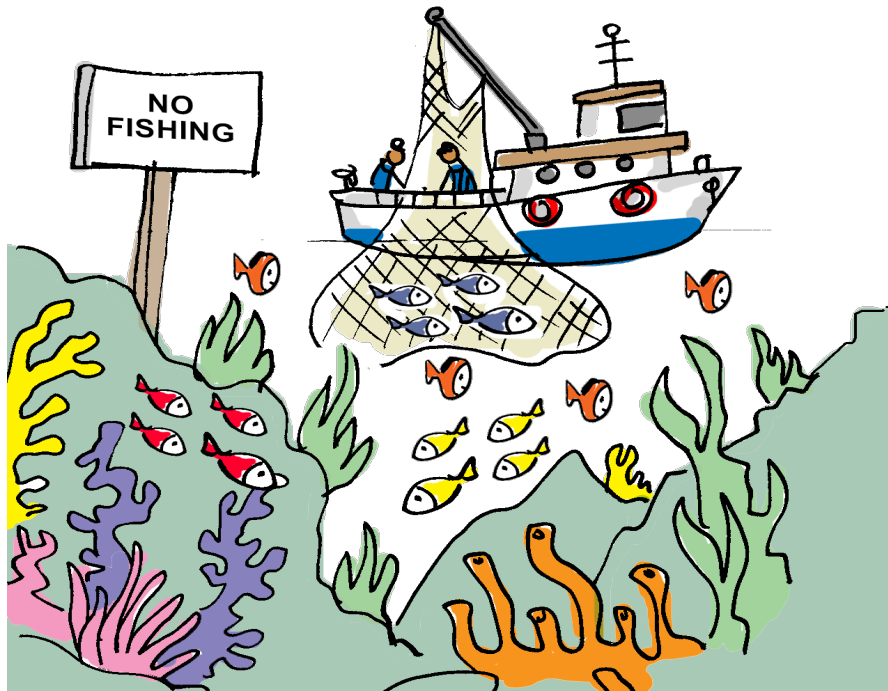
environmental affairs
Department:
Environmental Affairs
REPUBLIC OF SOUTH AFRICA



2014 BEFORE PHAKISA

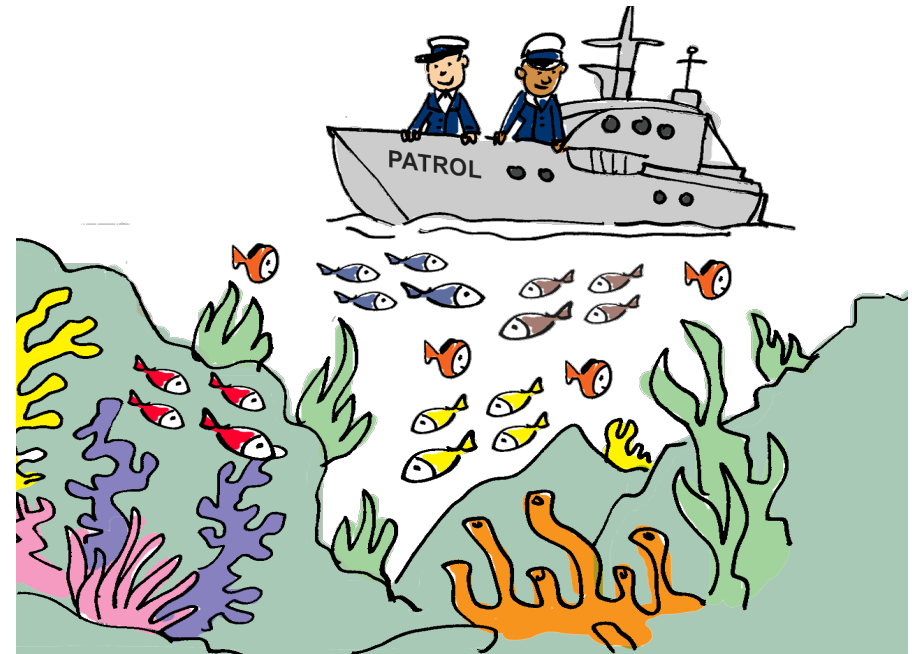
Before

Limited coverage by enforcement agencies due to uncoordinated schedules and functions



After

A Coordinated Enforcement Programme will reduce illegal ocean activities by optimising existing resources when monitoring ocean activities



environmental affairs
Department:
Environmental Affairs
REPUBLIC OF SOUTH AFRICA



INITIATIVE 5

ENHANCED AND COORDINATED ENFORCEMENT PROGRAMME

NOT EXHAUSTIVE



environmental affairs
Department:
Environmental Affairs
REPUBLIC OF SOUTH AFRICA



**agriculture,
forestry & fisheries**
Department:
Agriculture, Forestry and Fisheries
REPUBLIC OF SOUTH AFRICA



state security
State Security Agency
REPUBLIC OF SOUTH AFRICA



defence
Department:
Defence
REPUBLIC OF SOUTH AFRICA



the doj & cd
Department:
Justice and Constitutional Development
REPUBLIC OF SOUTH AFRICA



transport
Department:
Transport
REPUBLIC OF SOUTH AFRICA



mineral resources
Department:
Mineral Resources
REPUBLIC OF SOUTH AFRICA



home affairs
Department:
Home Affairs
REPUBLIC OF SOUTH AFRICA



South African
NATIONAL PARKS



**international relations
& cooperation**
Department:
International Relations and Cooperation
REPUBLIC OF SOUTH AFRICA



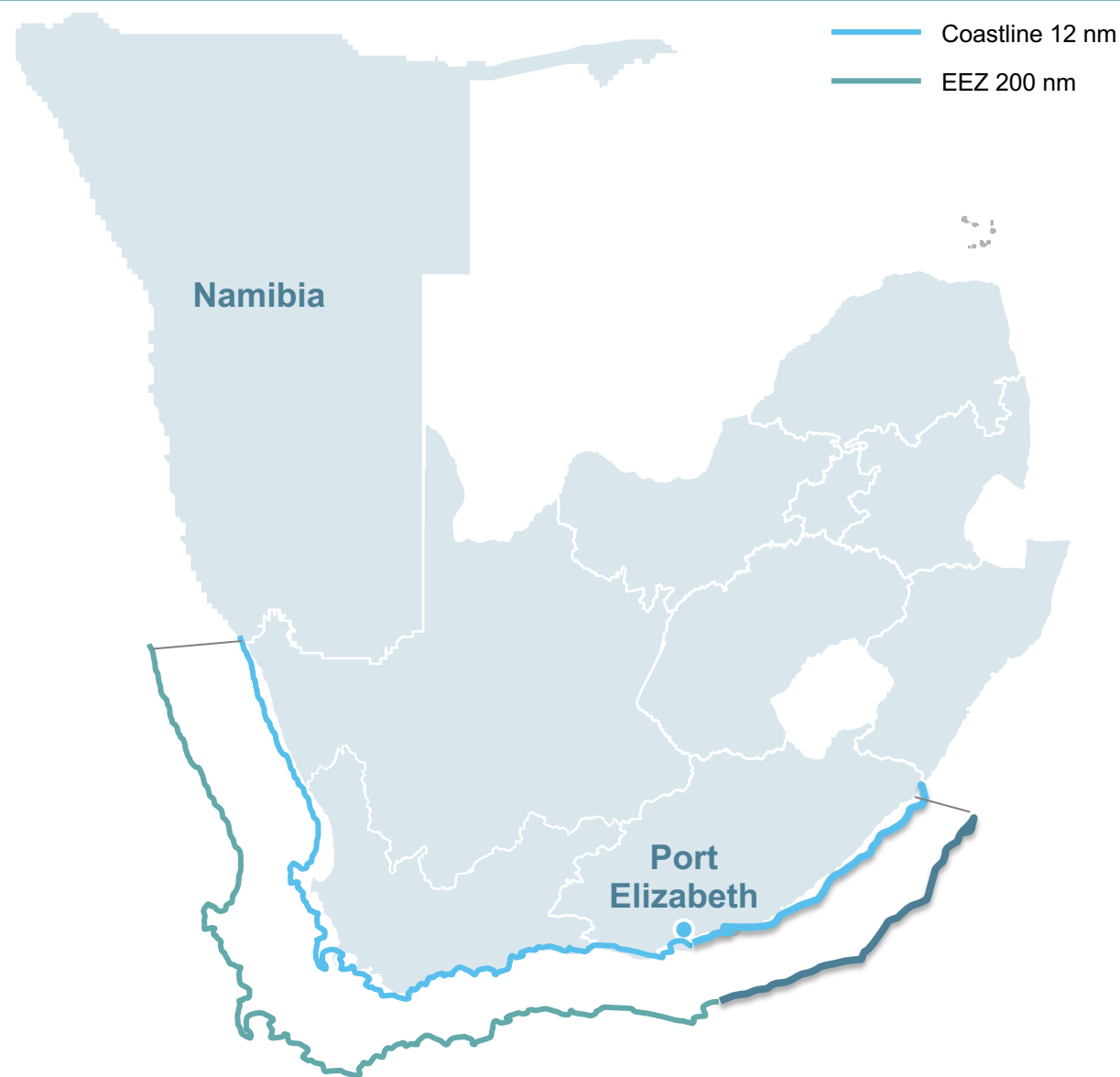
Collaborated & Shared Assets



This will support the existing Security Cluster Programme so that Security Assessments and Management Plans can be developed.



South African Coast >3200 km and Ocean Space (up to 200 nm)



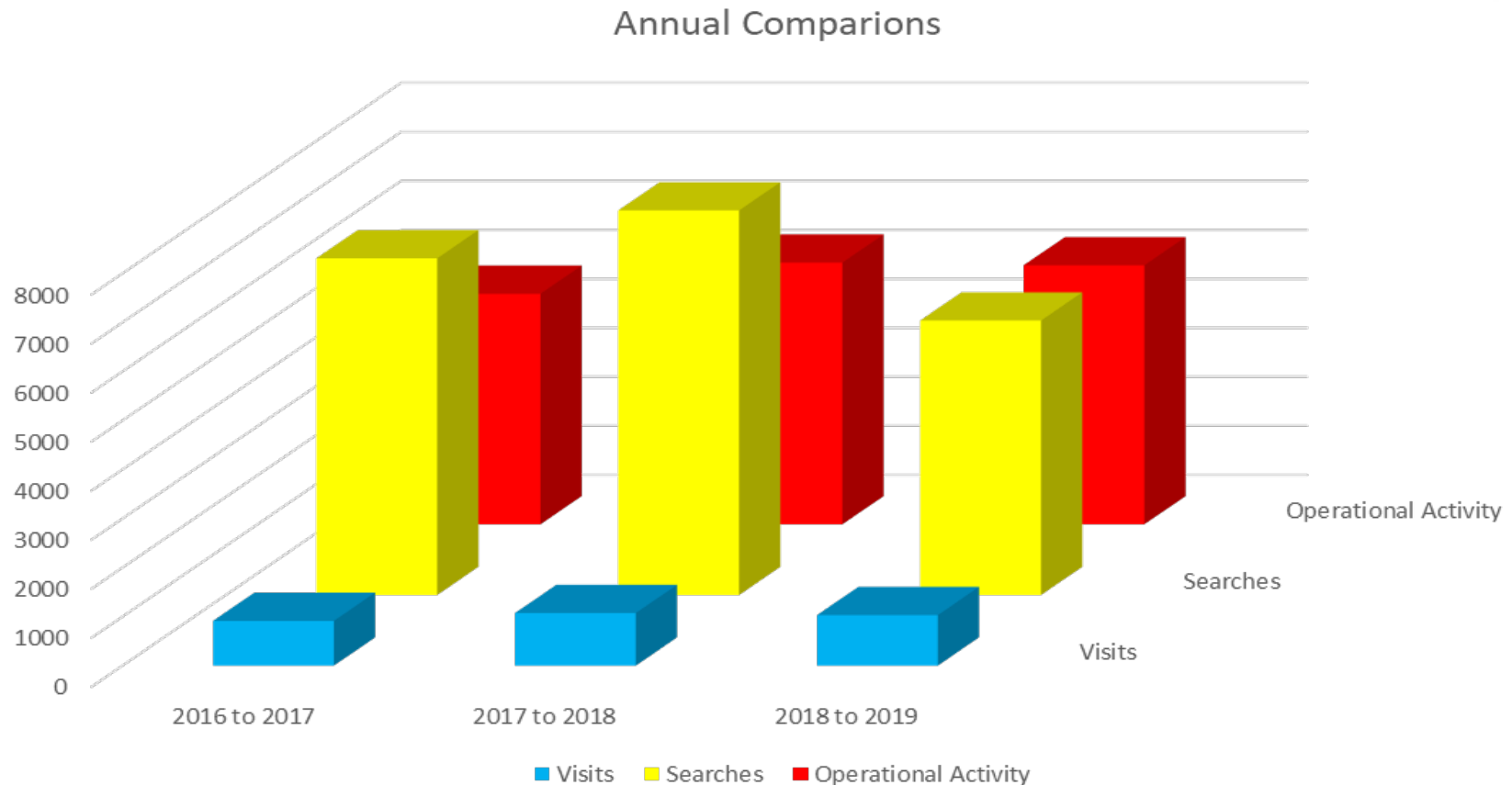
ENFORCEMENT FUNCTIONS

- Non-consumptive activity, e.g. whale watching and white shark cage diving
- Marine protected species (seals, seabirds, turtles, penguins etc.)
- Marine Protected Areas
- Illegal fishing
- Pollution prevention and combatting (coast, rivers, lakes, estuaries, oceans)
- Piracy
- Human trafficking
- Effluent discharge (contaminated water)
- Dumping at sea (waste)
- Customs/excise/sanitary rules
- Ballast water invasive species
- Illegal structures
- Waste smuggling
- Driving in a Coastal Area
- Illegal mining – Sand mining along the coast

RESOURCES COORDINATION – SA's 4 COASTAL PROVINCES



PHAKISA ACTIVITIES COMPARISONS



However, confiscations of marine resources increased by R 16 251 701 and R 5 523 616 respectively



PHAKISA OUTCOMES COMPARISONS

CONFISCATIONS

Total confiscations for the 2018/19 period for all four Provinces amounted to R 28 022 983

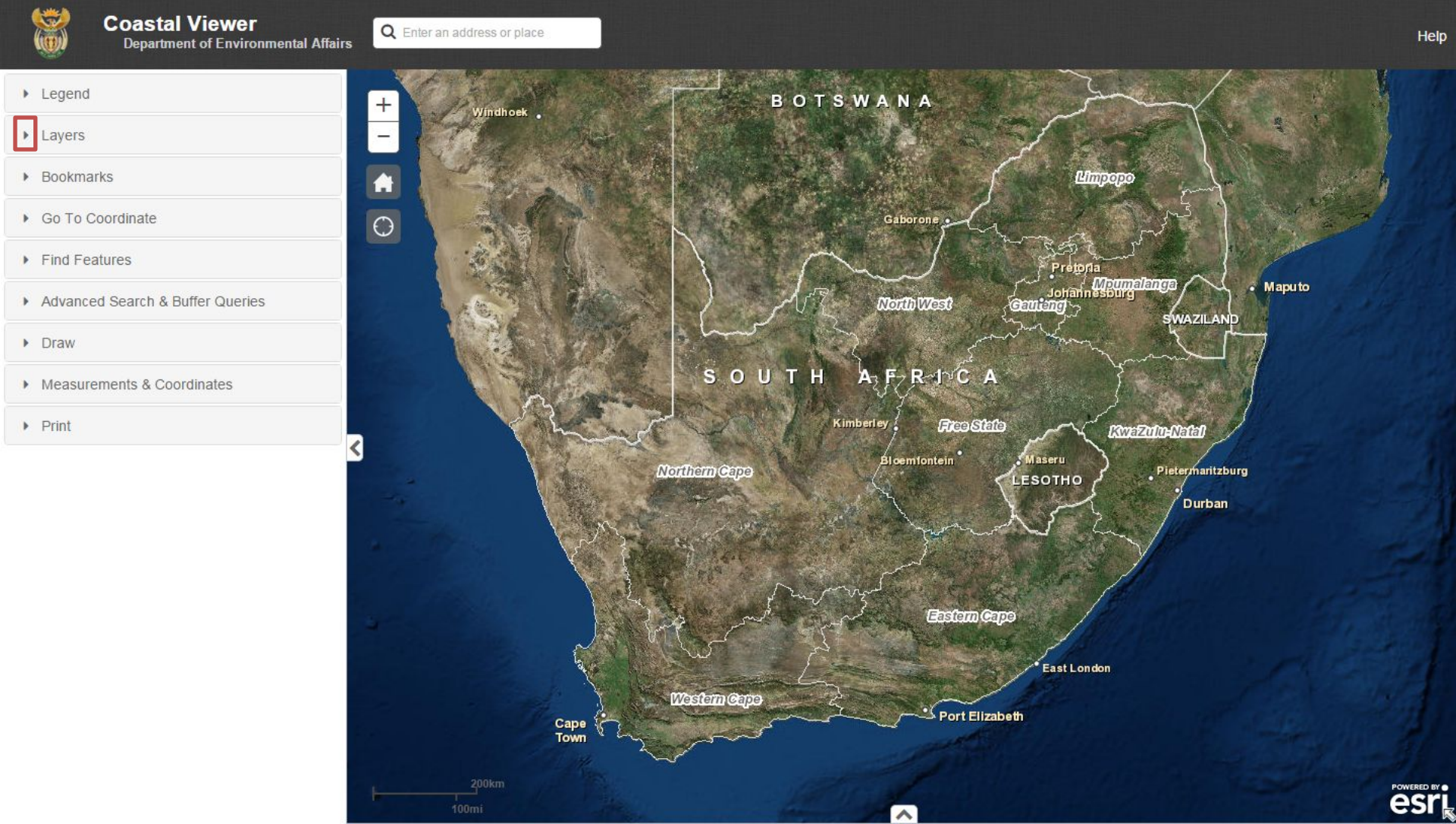
Abalone	R 21 317 365.00	}	Increase by 32.7% and 274% relation to 16/17 & 17/18
Rock Lobster	R 676 050.00		
Marine Resources	R 88 345.00		
Associated Equipment	R 4 875 960,00	➔	Increase by 39.7% and 175% relation to 16/17 & 17/18
Other and Illicit Goods	R 519 601.00		
CITES	R 515 000,00		

Increase in confiscations, relating to decrease in activity, could be attributed to a focused/target driven approach and inclusion of Reactive Operations.

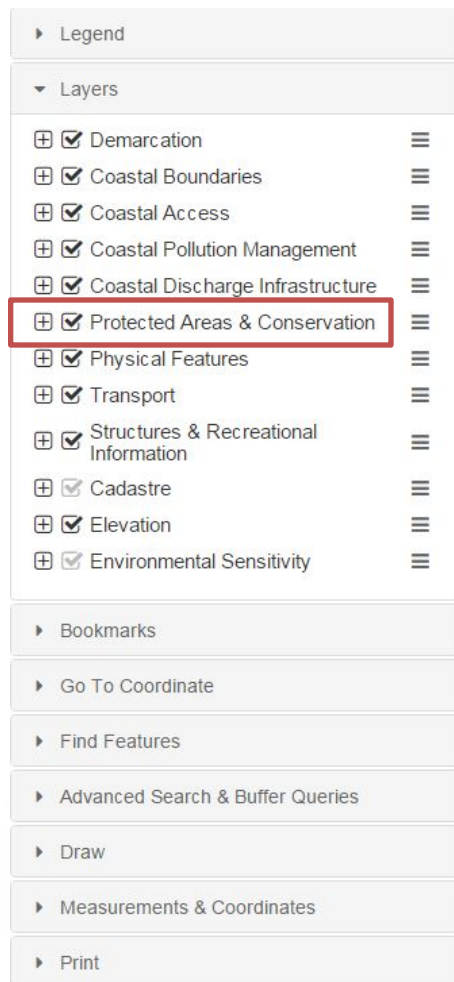


OCIMS FUNCTIONALITY

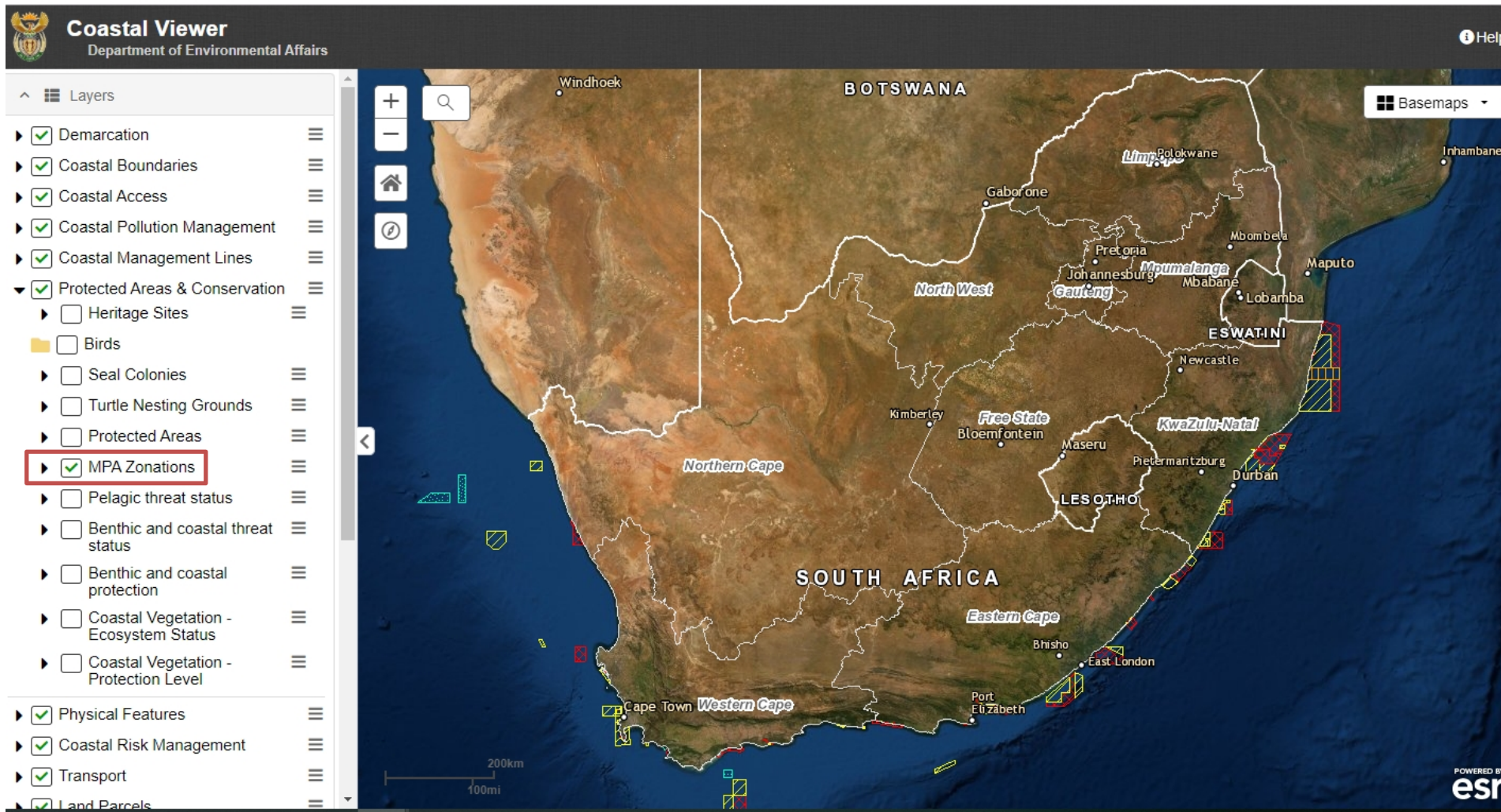
- Viewer will open
- Click on “layers” to expand



- Click on the + next to “Protected Areas and Conservation”



- Click in the box next to “MPA Zonations”





OPERATION 30 DAYS AT SEA 2.0

Tackling offshore and onshore pollution
offences leading to marine pollution

2019



KEY ACTIVITIES

MARPOL INSPECTIONS ANNEX 1 - 6

INSPECTIONS AT OPL

MARITIME SECURITY - RUMMAGING

EXTENDED PATROLS – ROBBEN ISLAND AND HOUTBAY

VEHICLE CHECK POINTS

PHAKISA INITIATIVE 5 OPERATIONS



environmental affairs
Department:
Environmental Affairs
REPUBLIC OF SOUTH AFRICA





WASTE TYRE TRAINING



INSPECTIONS AT OPL









Thank You

