



# *WASTEFORCE Project*

*Deterring and disrupting illegal trade and management of  
Waste by developing Tools for Enforcement, Forensics and  
Capacity Building*

*Nancy Isarin – Project Manager*

*Marion Stelling – Environmental Damage*



*The WasteForce project is funded by the European Union's  
Internal Security Fund — Police (ISFP/2017/AG/EM/821345)*



## About WasteForce



- 2 year running project December 2018 – December 2020
- Funded by the Internal Security Fund - Police
- IMPEL is the leading beneficiary
- United Nations University (UNU) co-lead

### **Associated Beneficiaries:**

- *Slovenia (IRSOP)*
- *Portugal (IGAMAOT)*
- *Germany (Police University)*
- *Ireland (Limerick University)*
- *Netherlands (Dutch Forensics Institute)*
- *United Nations Institute for Training and Research (UNITAR)*



*The WasteForce project is funded by the European Union's Internal Security Fund — Police (ISFP/2017/AG/EN/1821345)*

WasteForce

To boost the operational activities and capacities of authorities involved in the fight against illegal trade and management of waste through:

1. Development of new practical tools and methodologies;
2. Implementation of multi-stakeholder capacity building activities; and
3. Support of operational networking among practitioners in Europe in the Asia-Pacific region





- Better insight in trends and developments in the waste market
- Impact analysis method for waste policy changes
- Improved prosecution
- Better skilled law enforcement authorities



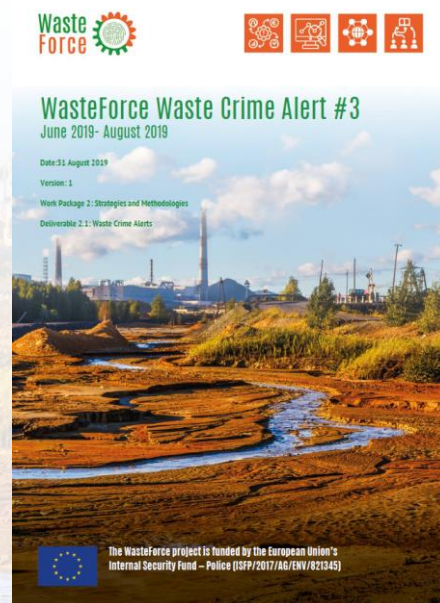


## *Waste Crime Alerts*



Quarterly Waste Crime Alerts published ([link](#))

- provide authorities and law enforcement quarterly overview of developments in the illicit waste trade
- Based on open source information



*The WasteForce project is funded by the European Union's Internal Security Fund — Police (ISFP/2017/AG/ENI/821345)*

WasteForce



- [Research Library](#)
- Clearing House Mechanism (launch 11/2019)
- Capacity Building toolkit (launch 11/2019)



## Portal for Environmental Enforcers

The Online Toolkits are free to members of relevant Competent Authorities. Please [log in or register](#) and once we verify your information, we will forward you a password to access the content.



**Shipment of Waste**



**Wildlife (coming soon)**



Introduction



Overview of the legislative landscape



Waste classification and problematic waste streams



Illegal shipment and their return



Intelligence-led investigations



Inspection and Detection



Next generation compliance



Investigation



Enforcement and prosecution of illegal waste shipment



Sentencing

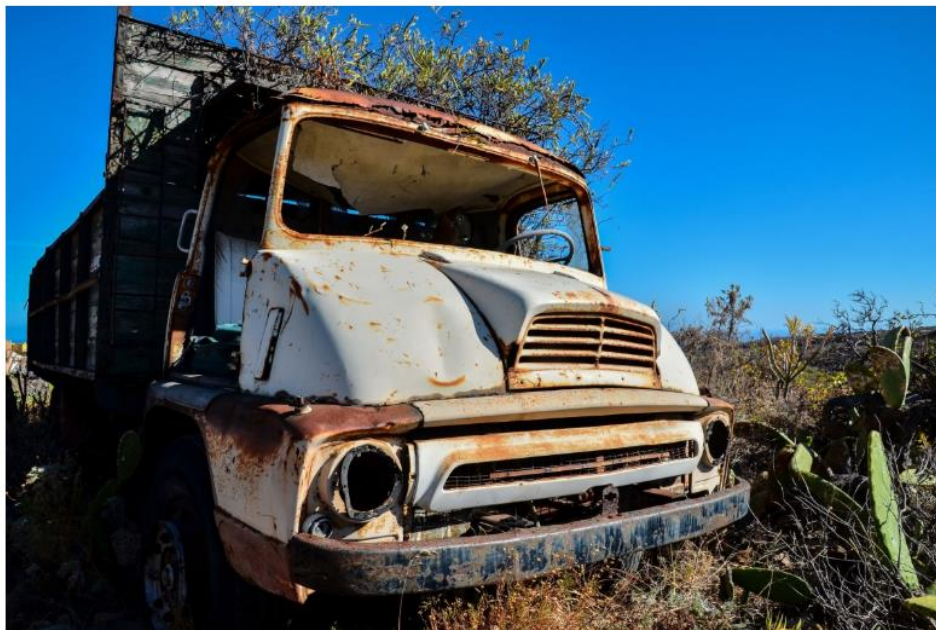


Interagency collaboration and networking



[IMPEL PREVENT](#) > [Shipment of Waste](#) > Waste classification and problematic waste streams

# Waste classification and problematic waste streams



## Introduction

The correct classification and coding of waste streams is important not only for reporting

## Contents [ hide ]

### Introduction

### Waste classification and Coding

- Basel Convention
- European List of Wastes (LoW)
- European Waste Shipment Regulation codes (waste codes)
- Combined Nomenclature (CN codes or customs codes)

### Examples of problematic waste streams

- Plastic
- E-waste / WEEE
- Waste mercury
- Paper and cardboard
- End-of-life vehicles (ELV)
- Waste tyres
- Batteries in vehicles
- Refused derived fuel

### Presentation

### Case law

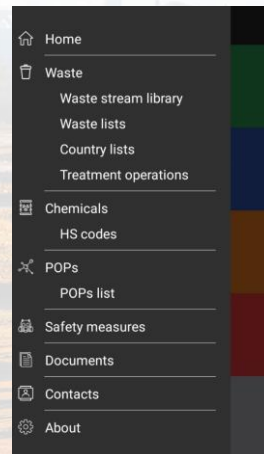
- High-risk HS codes
- Cathode ray tubes mis-declared as plastic scrap
- Co-mingled waste
- Illegal export of waste chemicals under the pretext of a product



*Watch-IT App*



Waste and Chemicals Inspection Tool » to support inspectors and law enforcement officers responsible for monitoring transboundary shipments of waste and chemicals.



*The WasteForce project is funded by the European Union's Internal Security Fund — Police (957P/2017/AG/ETN/821345)*

WasteForce



## Watch-T7 App



*The WasteForce project is funded by the European Union's Internal Security Fund — Police (19FP/2017/AG/EMU/821345)*

WasteForce

■ Trainings:

1. Portugal 27-29 November on Prosecution of Waste Crime (IGAMAOT)
2. Germany March 2020 (Policy University)
3. Slovenia May 2020 (Environmental Inspectorate)
4. Thailand June 2020 (UNEP-AP)

■ Webinars



*The WasteForce project is funded by the European Union's Internal Security Fund — Police (ISFP/2017/AG/EN/1821345)*

## ▪ EU and Global Policy Impact Analysis Methodology:

- to analyse existing impact assessment methodologies for policy changes linked to waste trade and management
- to propose improved and integrated models to predict the impacts of future policy changes





### ■ Measure the impact of environmental damage:

- Collect existing technical methods used to estimate damage and the number of criminal cases they relate to
- Generate information on environmental damage caused by waste crime
- Support prosecutors in criminal cases





## ■ Process of impact assessments:

- Identity of the waste
  - Waste codes shipping documents
  - Amount of waste
  - Additional inspection, sampling, analysis
- Exposure assessment
  - Recovery operations
  - Recycling, landfilling, etc.
- Risk or life cycle impact assessment



*The WasteForce project is funded by the European Union's Internal Security Fund — Police (I*

## ANNEX VII

### ION ACCOMPANYING SHIPMENTS OF WASTE REFERRED TO IN ARTICLE 3 (2) AND (4)

	<b>2. Importer/consignee</b> Name: Address: Contact person: Tel.: Fax: E-mail:	
m <sup>3</sup> :	<b>4. Actual date of shipment:</b>	
<b>5.(b) 2<sup>nd</sup> carrier</b> Name: Address: Contact person: Tel.: Fax: E-mail: Means of transport: Date of transfer: Signature:		<b>5.(c) 3<sup>rd</sup> carrier</b> Name: Address: Contact person: Tel.: Fax: E-mail: Means of transport: Date of transfer: Signature:
collector:	<b>8. Recovery operation (or if appropriate disposal operation in the case of waste referred to in Article 3(4)):</b> R-code/D-code: <b>9. Usual description of the waste:</b>	
□	<b>10. Waste identification (fill in relevant codes):</b> (i) Basel Annex IX: (ii) OECD (if different from (i)): (iii) Annex IIIA (*): (iv) Annex IIIB (*): (v) EC list of wastes: (vi) National code:	



## ■ Life cycle impact analysis

- EU policy
  - Build up of databases with background information
  - Availability of software (free and commercial) for calculations

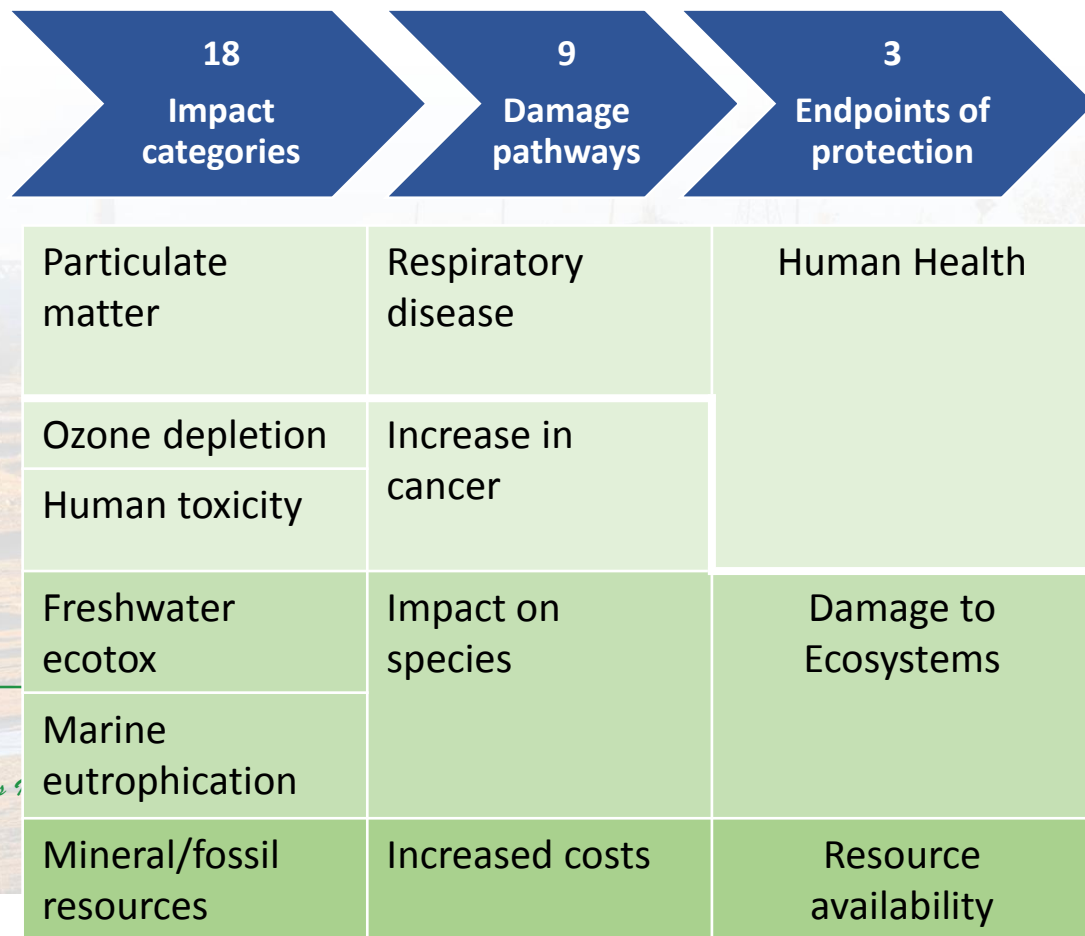


*The WasteForce project*



## Standardisation

- Quantification effects
- Effects become comparable



*The WasteForce project is funded by the European Union's 4*



## ■ Illegal waste trafficking

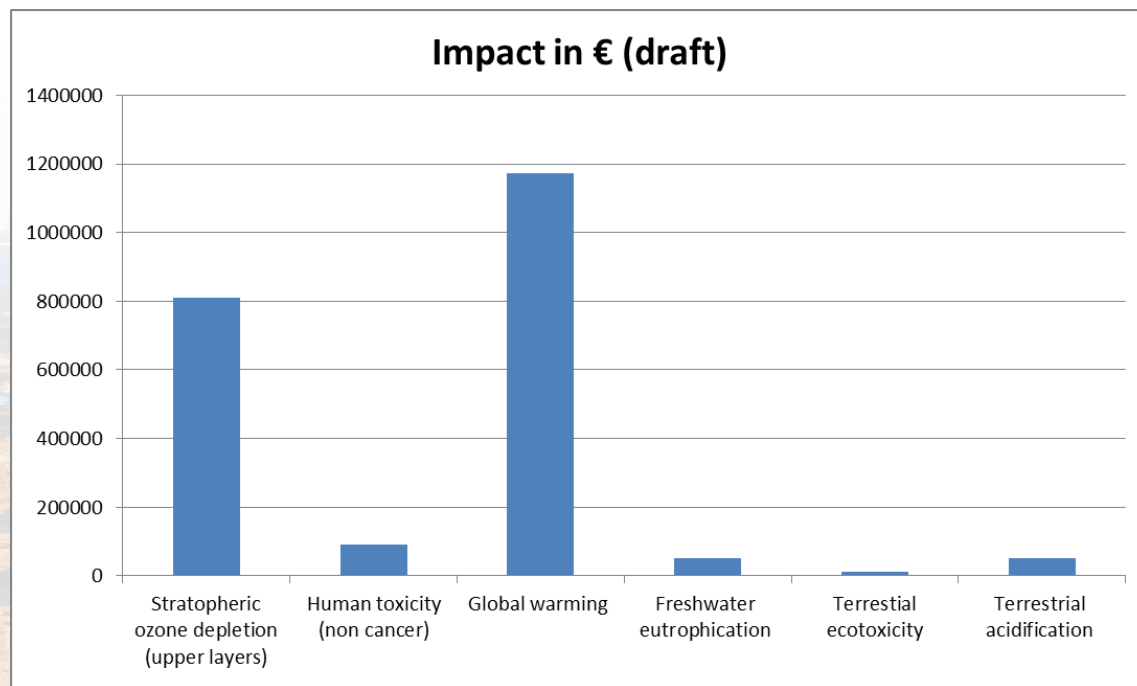


*The WasteForce project is funded by the European Union's Internal Security Fund — Police (ISFP/2017/AG/EN/1821345)*



## ■ Results (draft)

- Overall € 2,5 million
- Per transport € 37 000,-



- Inventory of information exchange mechanism between EU and Asian Pacific countries
- Guidance for prosecutors (consultations in Asia and the EU coming up)





*Any questions?*

*Nancy Isarin – Project Manager*

*Email: [Nancy.Isarin@impel.eu](mailto:Nancy.Isarin@impel.eu)*

*Project website: [www.wasteorceproject.eu](http://www.wasteorceproject.eu)*



*The WasteForce project is funded by the European Union's  
Internal Security Fund — Police (157P/2017/AG/EM/821345)*